

Software Procedure

SWP-0017 Obtaining New Certificate Public Key

Revision: 1

Effective Date: 8/31/2010

Alaska Native Tribal Health Consortium
Division of Health Information & Technology
4000 Ambassador Drive
Anchorage, AK 99508
Tel: (907) 729-2260
Fax: (907) 729-2269



Contents

Contents	2
Purpose	3
Audience	3
Scope	3
Obtaining the Public Key from an Existing tConsultX Database	3
Appendix A	8

Purpose

The purpose of this document is to outline the necessary steps to obtaining the public key from within the SQL database of a tConsult Server organization with the intent of applying it to a different tConsult Server organization.

Audience

This document is written for IT technicians and system administrators who are responsible for building, configuring, or maintaining an AFHCAN tConsult Server. It is assumed readers are familiar with intermediate-level computer terms and concepts as well as have a basic understanding of SQL.

Scope

On tConsult Servers that host multiple organizations (multi-org), all tConsult databases use the same public key for encrypting data between the server and clients. Moving and restoring an organization from a separate, standalone server to a new multi-org server means the public key contained in the old server SQL database is no longer valid on the new server. Clients will be unable to re-establish communication with the newly restored organization and the trust relationships with other servers will fail.

This document details the necessary steps to obtain a public key from a server that hosts multiple organizations and apply that public key to a newly restored tConsult database.

The appendix at the end of this document displays the actual SQL scripts used.

Obtaining the Public Key from an Existing tConsultX Database

In this section, the steps are detailed for obtaining a public key from an existing tConsultX database on a server that hosts multiple organizations.

- 1.) Open Enterprise Manager (if using SQL 2000) or SQL Server Management Studio (if using SQL 2005). **Highlight an existing** tConsult database and **open SQL Query Analyzer**.

Note: Do NOT highlight the newly restored tConsultX database.

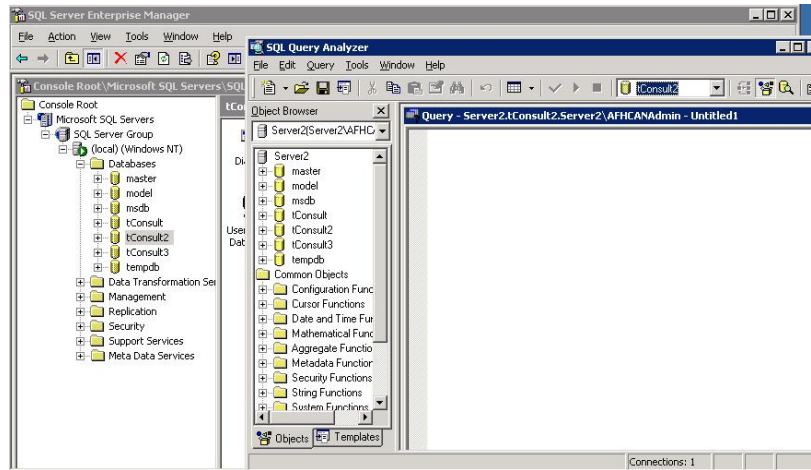


Figure 1 – Opening SQL Query Analyzer

2.) In SQL Query Analyzer *open the GetPubKey.sql.*

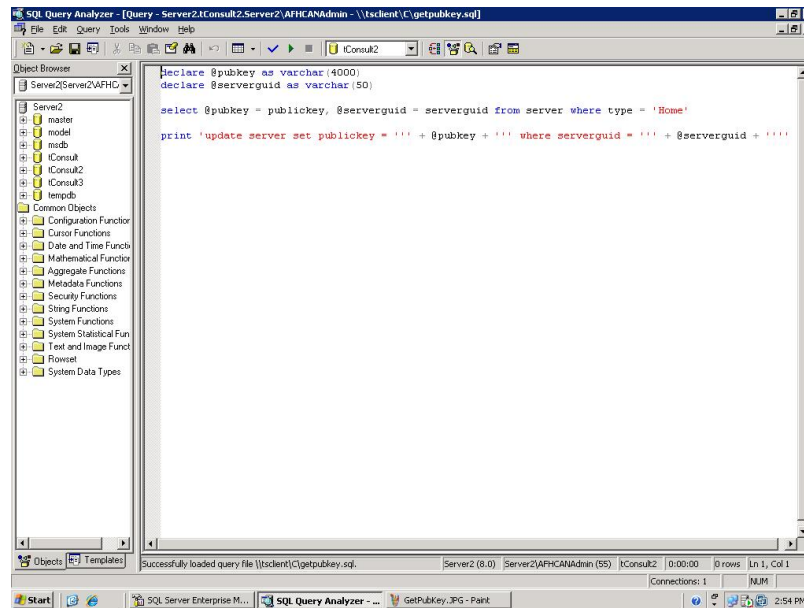


Figure 2 – Opening the SQL Script

3.) *Run the script* by clicking on the green triangle. Click in the results box below and *Select All | Copy*.

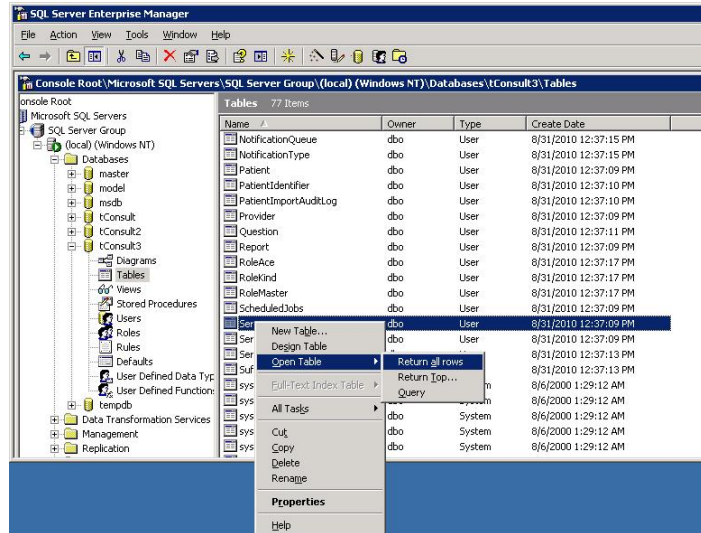


Figure 5 – Returning All Rows upon Opening a Table

- 6.) Locate the name of the organization in the Description column (type will be Home). **Highlight the ServerGUID in the first column and copy to the clipboard.**

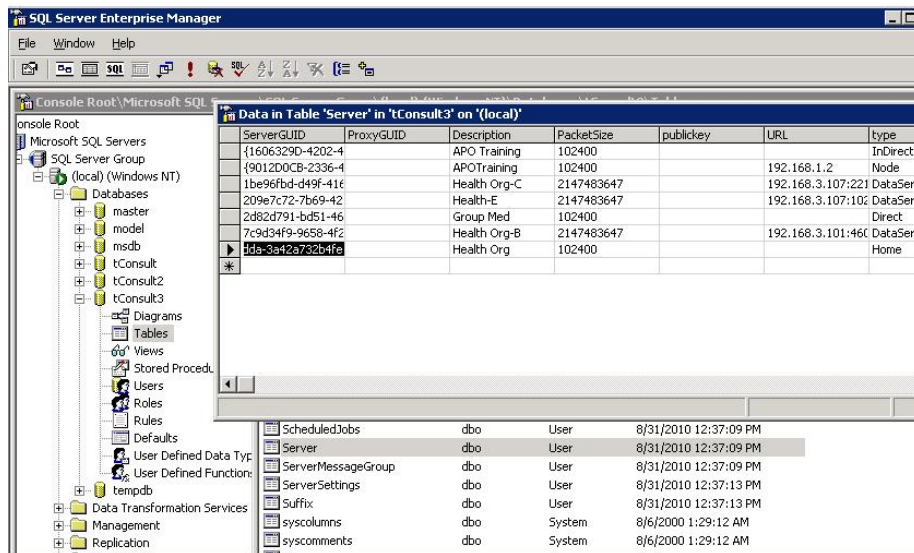


Figure 6 – Copying the ServerGUID to Computer Clipboard

- 7.) Return to Notepad and **replace the ServerGUID** between the quotations in the last line of the script. **Save** the document as UpdateServerPubKey.txt.

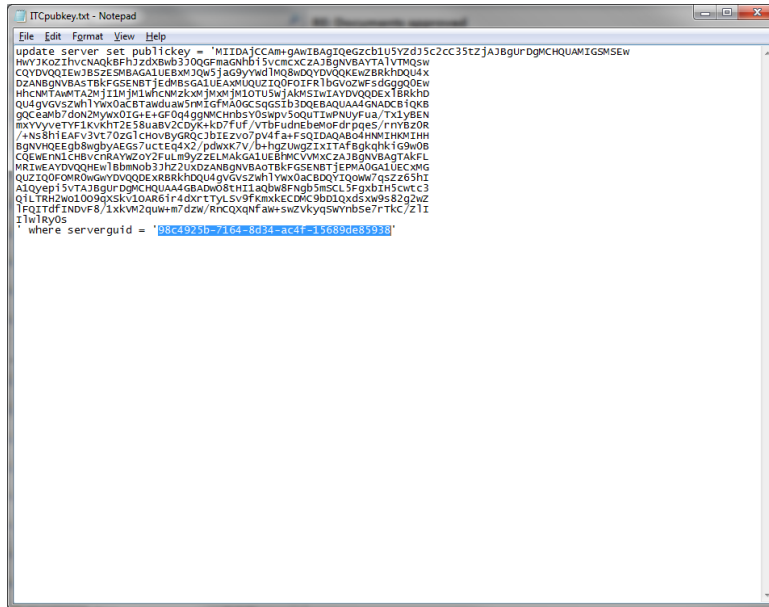


Figure 7 – Copying the ServerGUID to Computer Clipboard

- 8.) Using Windows Explorer, *rename* the updateserverpubkey.txt to UpdateServerPubKey.sql.
- 9.) *Copy* UpdateServerPubKey.sql to UpdateNodePubKey.sql. Do a right-mouse click on UpdateNodePubKey.sql and choose *Edit* using Notepad. *Replace server in the first line with nodeserversetup*. *Save* the file.

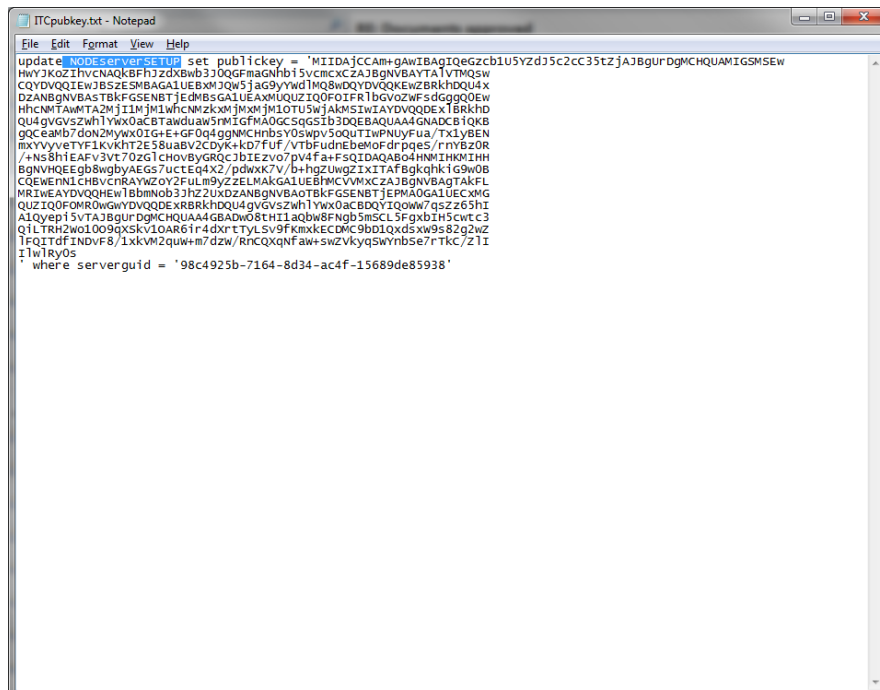


Figure 8 – Changing Server to NodeServerSetup

Applying UpdateServerPubKey.sql Script

1. With the restored database highlighted within Enterprise Manager, open SQL Query Analyzer. **Open UpdateServerPubKey.sql and run it** against a newly restored database.
2. **Stop and restart the tConsultX Server Service** for this database within Computer Management | Services.
3. **Repeat these two steps for each organization** that has a trust relationship with the restored organization.

Applying UpdateNodePubKey.sql Script*

1. Select one Node Server. Open Enterprise Manager and **highlight the S2SPH8** database. **Open SQL Query Analyzer and open UpdateNodePubKey.sql and run the script.** This will update the public key for the restored organization on the Node Server.
2. Repeat this on all Node Servers.

Note: On the Internet Secondary Node server, run the UpdateNodePubKey.sql script on both S2SPH8-52 AND S2SPH8-60 databases.

*Applying UpdateNodePubKey is internal to AFHCAN only.

Appendix A

There are 3 SQL scripts used in the obtaining and applying public keys. Each script is detailed here.

1.) GetPubKey.sql

```
declare @pubkey as varchar(4000)

declare @serverguid as varchar(50)

select @pubkey = publickey, @serverguid = serverguid from server where type = 'Home'

print 'update server set publickey = ' + @pubkey + ' where serverguid = ' + @serverguid + ''
```

2.) UpdateServerPubKey.sql

Update server set publickey = 'place public key here'

Where ServerGUID = 'place ServerGUID here'

3.) UpdateNodePubKey.sql

Update nodeserversetup set publickey ='place public key here'

Where ServerGUID='place ServerGUID here'

End of procedure.