

Software Procedure

SWP-0004 Joining tConsult Servers to a Domain

Revision: 2

Effective Date: 7/28/2010

Alaska Native Tribal Health Consortium
Division of Health Information & Technology
4000 Ambassador Drive
Anchorage, AK 99508
Tel: (907) 729-2260
Fax: (907) 729-2269



Contents

Purpose	<u>33</u>
Audience	<u>33</u>
Scope	<u>33</u>
Device Configuration	<u>44</u>
Computer Services	<u>66</u>
Network Connectivity Properties	<u>66</u>
Join the tConsult Server to the Domain	<u>88</u>

Purpose

AFHCAN tConsult Servers are initially built and installed with security configurations in place to enable the server to function as a standalone server in an austere environment. Because of these security restrictions, there are several steps required to enable the server to become part of and communicate with a domain infrastructure. This document outlines the steps necessary to have a tConsult Server join an organization's Domain.

Audience

This document applies to persons who work in the Information Technology department within Domains and have a basic working knowledge of Windows 2003 and Active Directory for Windows.

Scope

In accordance with HIPAA regulations, protecting healthcare data is paramount to not only protect patient confidentiality, but also insure the integrity of the data.

More and more of our customers are opting to have the servers join their domain to integrate into their backup solution, provide for anti-virus protection and keep the OS current with the latest Windows updates/patches/hotfixes.

When AFHCAN tConsult Servers are first shipped to the customer and consequently installed in the customer's server rack, several services need to be enabled prior to joining the customer's domain.

Device Configuration

NetBios over TCP/IP is disabled within Device Connection and needs to be re-enabled.

1. Using Computer Management, click on Device Manager. From View on the Menu Bar select Devices by Connection and Show Hidden Devices.

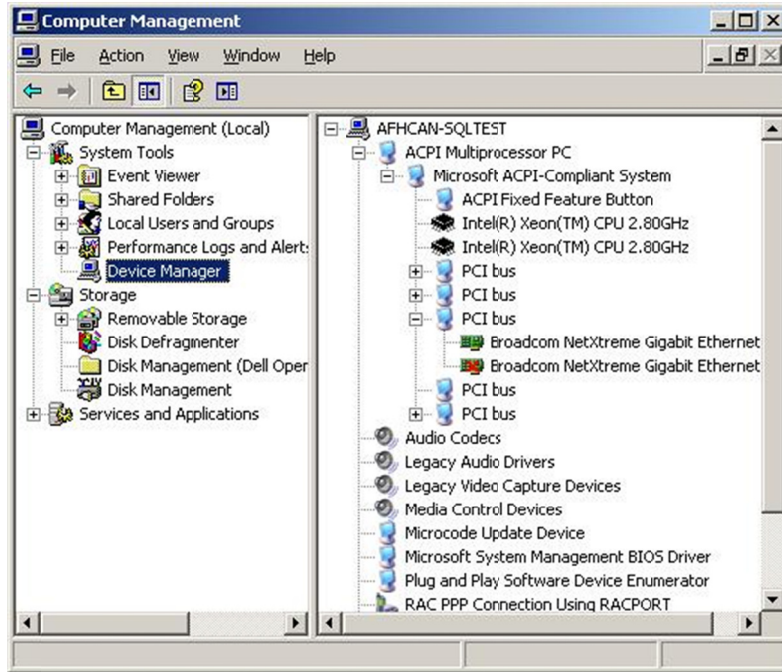


Figure 1 – Computer Management and Device Manager

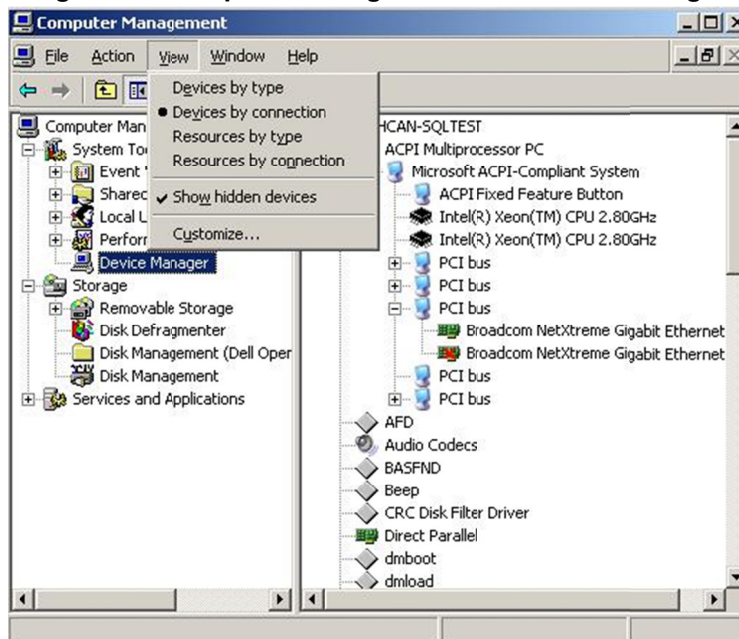


Figure 2 - Showing hidden devices

2. Double clicking on NetBios over TCP/IP, change the Device usage to Use this device (enable).

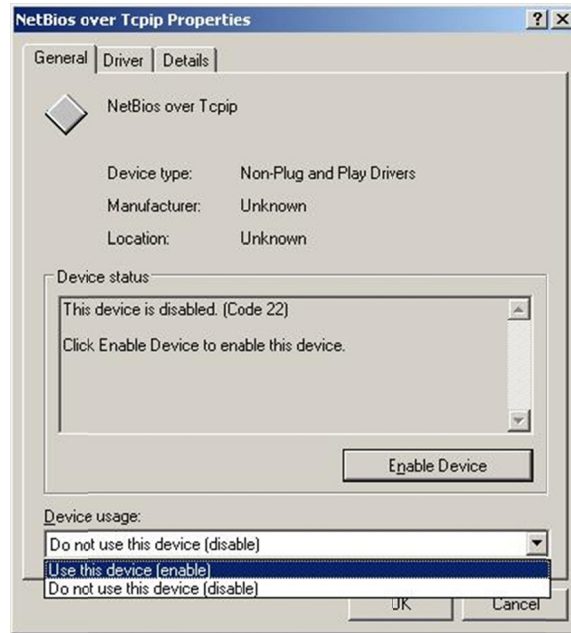


Figure 3 - NetBios over TCP/IP Properties dialog box

3. Click on the Driver tab and change the Startup type to System as shown in Figure 4.

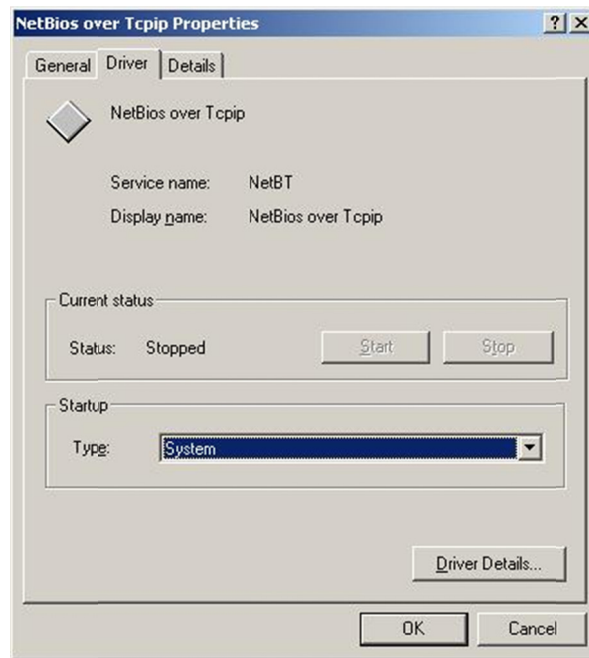


Figure 4 – NetBios over TCP/IP Properties dialog box cont'd

Computer Services

There are several services that need to be enabled before a server can be joined to a Domain.

1. Using Administrative Tools – Services, enable the following services:

- DNS Client
- Workstation
- Net Logon
- RPC Locator
- TCP/IP NetBios Helper

Network Connectivity Properties

The NIC has its own hardening in place that needs to be changed.

1. Click on the Local Area Connection properties. Enable Client for Microsoft Networks as well as File and Network Sharing.

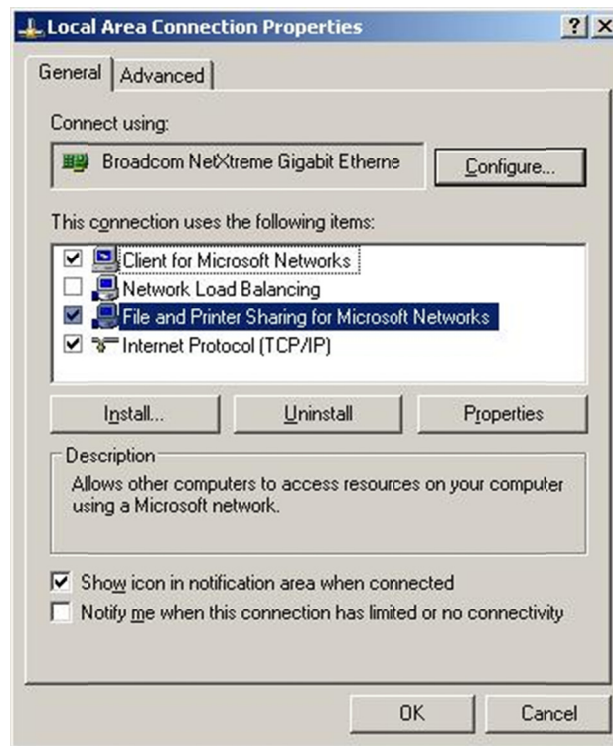


Figure 5 – Local Area Connection Properties dialog box

2. Highlight Internet Protocol (TCP/IP) and click on Properties. Enter the DNS Server IP(s)

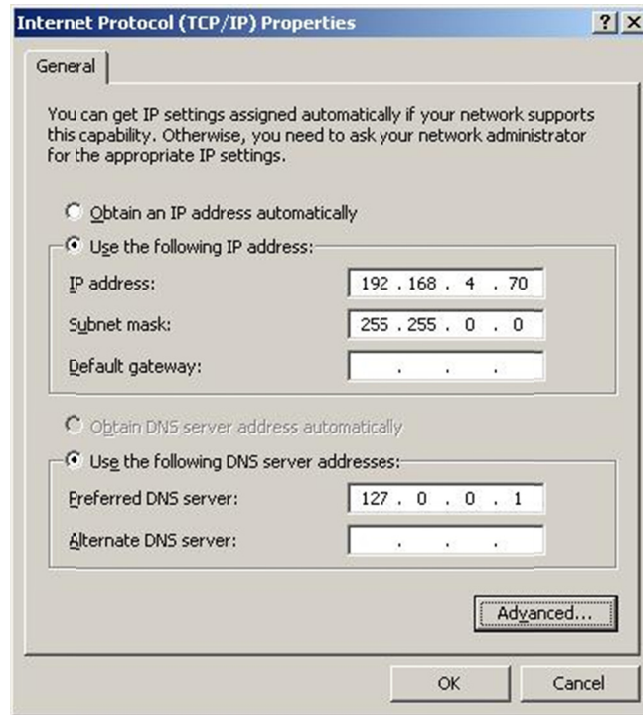


Figure 6– Internet Protocol (TCP/IP) Properties Dialog box

3. Click on the Advanced tab, select the WINS tab and place a checkmark in front of Enable LM Hosts, and click the radial button for Enable NetBIOS over TCP/IP as shown in the figure below.

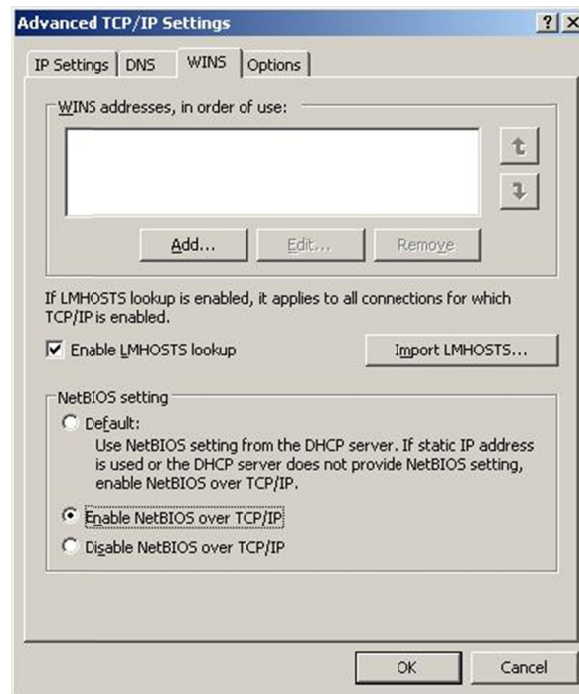


Figure 7 – Advanced TCP/IP Settings - WINS

4. Reboot the server

Join the tConsult Server to the Domain

In accordance with the organization policy, join the tConsult server to the Domain with a Domain Administrator account. Reboot the server.

At this point, backup software, anti-virus software, Windows Updates/Patches/Hotfixes can now be added and configured as per the Domain policy.

End of procedure.