

Software Procedure

SWP-0044 tConsult Update Server Configuration

Revision: 4

Effective Date: 03/30/2011

Alaska Native Tribal Health Consortium
Division of Health Information & Technology
4000 Ambassador Drive
Anchorage, AK 99508
Tel: (907) 729-2260
Fax: (907) 729-2269



Contents

Purpose	2
Audience	2
Scope	2
Additional Resources	3
Configuring tConsult Update Server	3

Purpose

The purpose of this document is to provide detailed steps on configuring tConsult Update Server which in turn will allow tConsult Update Clients to connect to the tConsult Update Server to receive future upgrades.

Audience

This document applies to persons who work in the Information Technology department within an organization and have a basic working knowledge of Windows Server 2003 and Windows Server 2008.

Scope

The Update product was designed to publish patches/future upgrades to remote clients that are connected to the tConsult server. By having the tConsult Update Server properly configured and the tConsult Update Client loaded on a cart, the client will communicate with the tConsult Update Server to check for any updates. If there are new updates present, the client will download and install.

All updates are signed by two of five personnel. They are Director of Product Development, Systems Integration Manager, Product Manager, Quality Manager and Software Development Manager. If an executable is not signed the tConsult Update Server will not accept the command. This is designed to ensure that all updates have been tested and verified for quality.

The order of installation starts with the tConsult Update Server software, and then proceeds to the tConsult Update Client software.

The remainder of this document provides a step by step guide to configuring the tConsult Update Server.

Note: For multiple Organizations hosted on the same server, these steps must be repeated for each tConsult Update Server site.

Additional Resources

SWP-0045 tConsult Update Server Software Installation

Configuring tConsult Update Server

Upon completion of the installation of tConsult Update Server as detailed in SWP-0045 tConsult Update Server Installation document, the tConsult Update Server needs to be configured prior to installing the tConsult Update Client.

Note: When configuring the tConsult Update Server, it needs to be accomplished on the host server – it cannot be configured from a remote browser.

1. **Open** Internet Explorer and **Add** about:blank to trusted sites within Internet Explorer.
2. **Enter** the following URL into the address bar:

<https://IP Address Of Your Server/Update>

3. The first time tConsult Update Server is opened, it appears as in Figure 1. **Click** on the **Admin** link in the upper right corner.

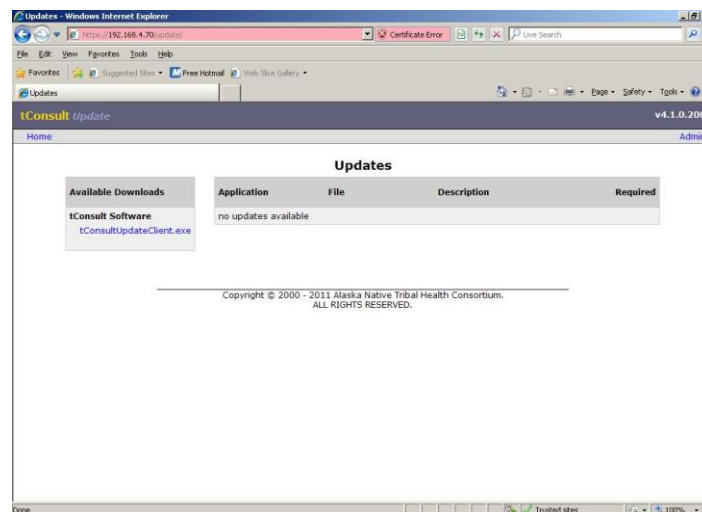


Figure 1 – Starting tConsult Update Server for the First Time

Note: All pictures are representative only. Configuring tConsult Update Server software is completed in accordance to these instructions.

- tConsult Update Server is not a part of the tConsult Server software, but rather a separate component. A new Username must be created. Generally the Username and password is the same as for the tConsult software.

Enter a New Username and New Password. **Click** on Create User.

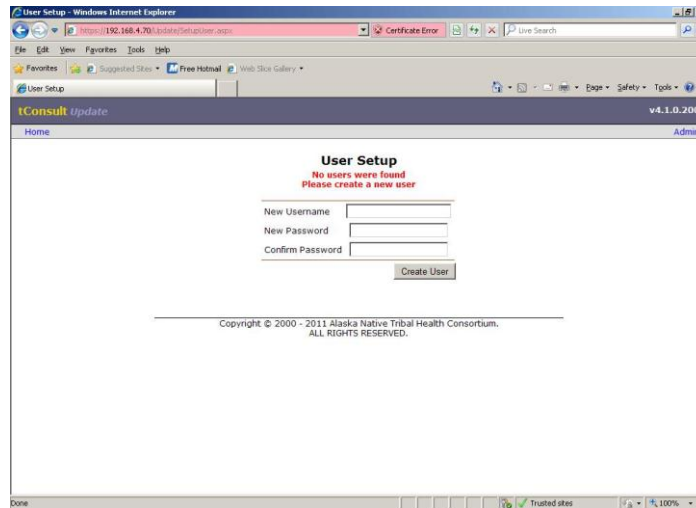


Figure 2 – Creating New User

- Enter** the Username and password created in the previous step and then **Click** on **Login**.

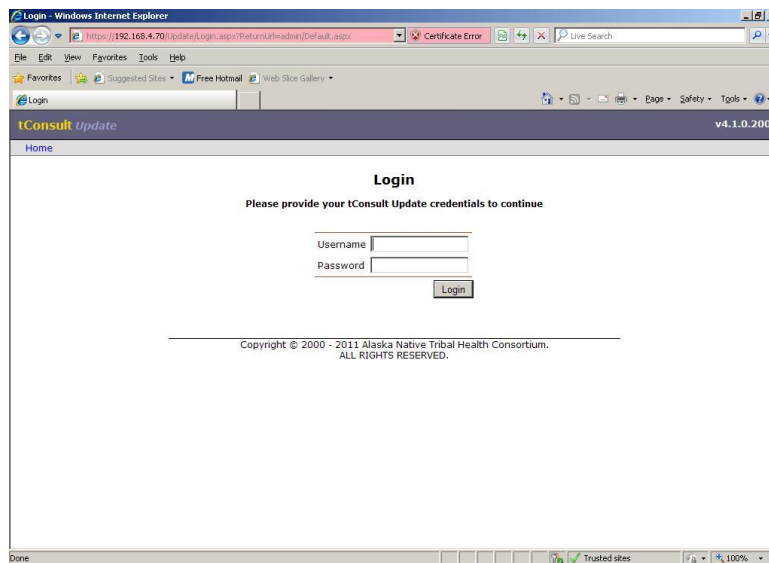


Figure 3 – Logging into tConsult Update Server

- The Admin Summary window is displayed. **Click** on Applications **“edit”**.

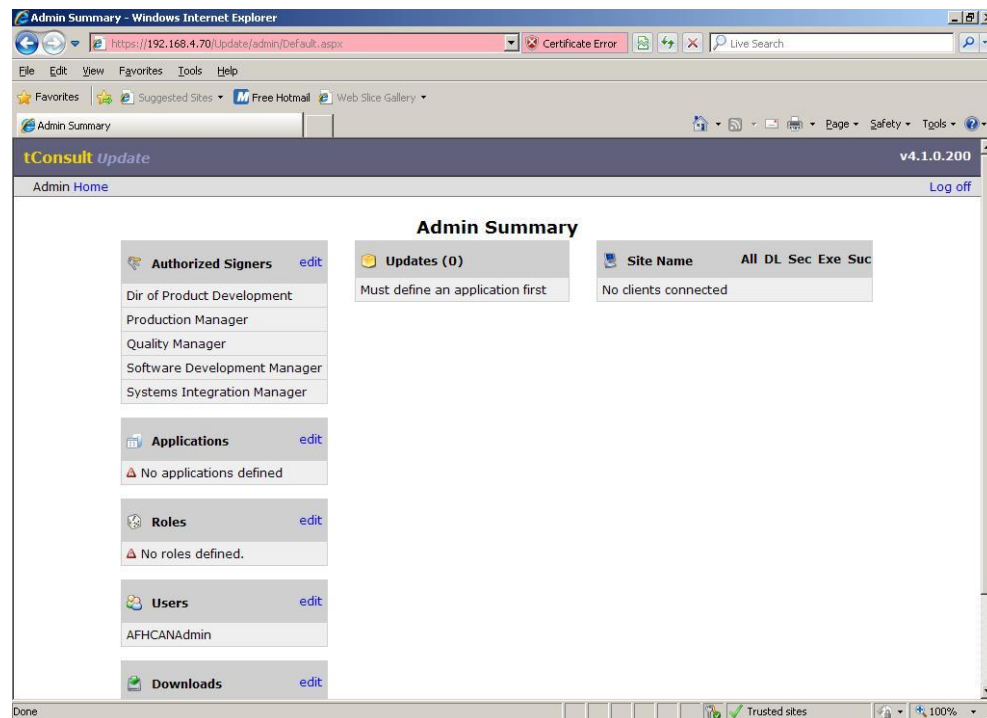


Figure 4 – Admin Summary Page

- This feature is great for organizing categories of updates. One can be labeled Telehealth, another could be used for Microsoft Patches, etc.

Enter Telehealth, and then *click* on the “add” link. *Click* the Back button to return to the Admin Summary page.

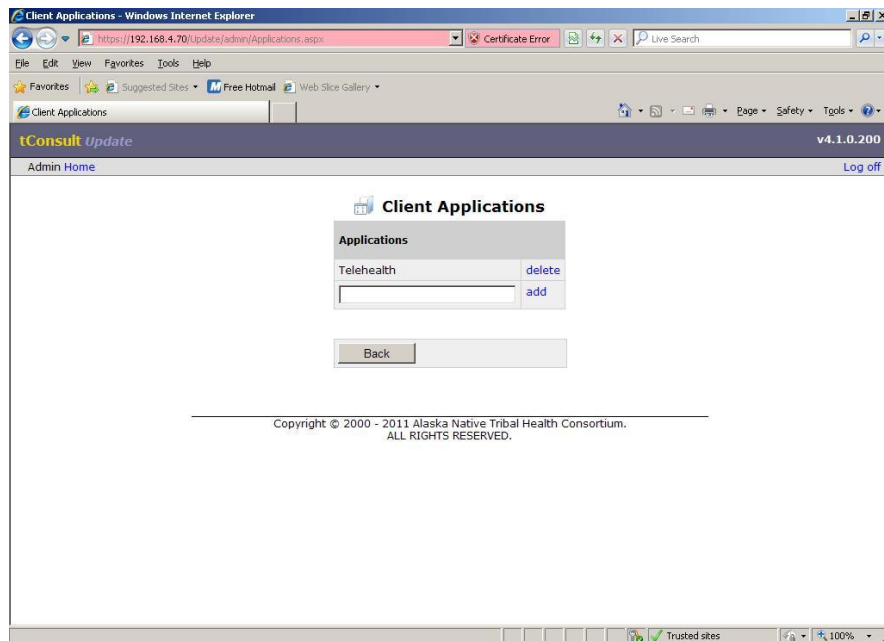


Figure 5 – Creating Client Applications

- By creating Client Roles, updates can be pulled by clients based on their role. **Cart should be the first Client Role to be added.**

Other roles that can be added are desktop, workstation or laptop. **Click** on the Back button when all roles have been created.

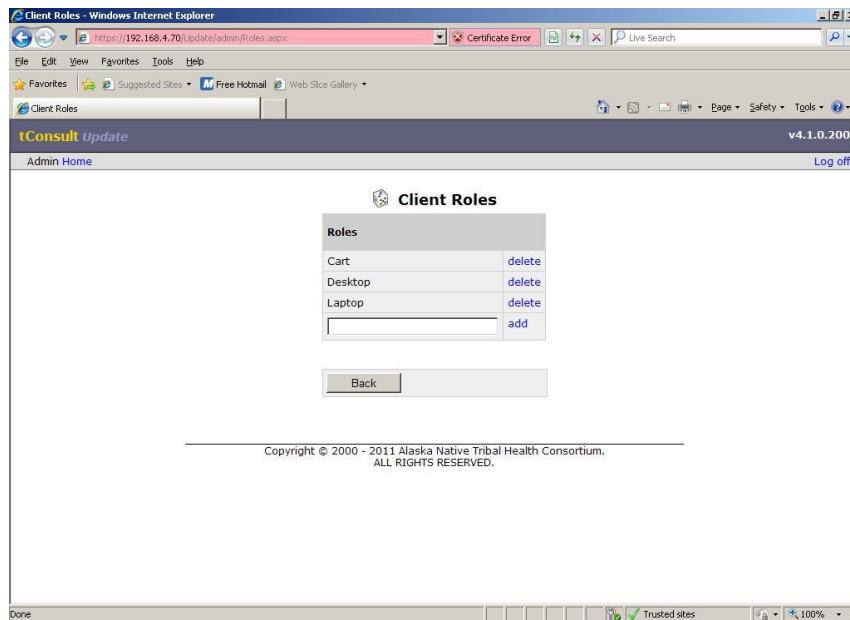


Figure 5 – Creating Client Roles

9. Figure 6 is a representative example of what the Admin Summary page will show once configuration is complete.

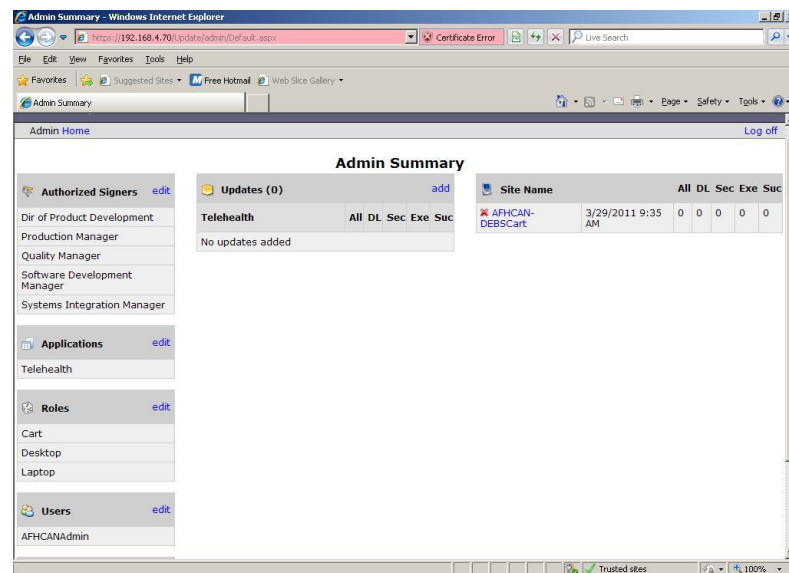


Figure 6 – Configured Admin Summary Page

10. The Downloads section allows an administrator to upload applications that may be needed by cart clients such as Quicktime, Cart Tools or .Net applications.

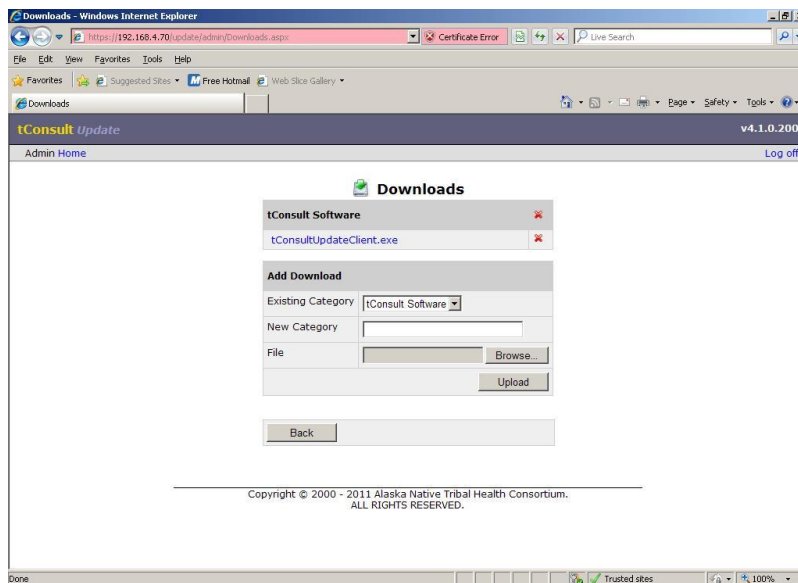


Figure 7 – Downloads Dialog Box

11. To organize the files that can be downloaded by clients in the future, **creating New Category** can be used. For illustrative purposes, a new category of .Net Framework 2.0 has been created.

Browse to the file you want available for clients. For demonstration purposes, .Net 2.0 is being added. Once the file is entered, **click on Upload**.

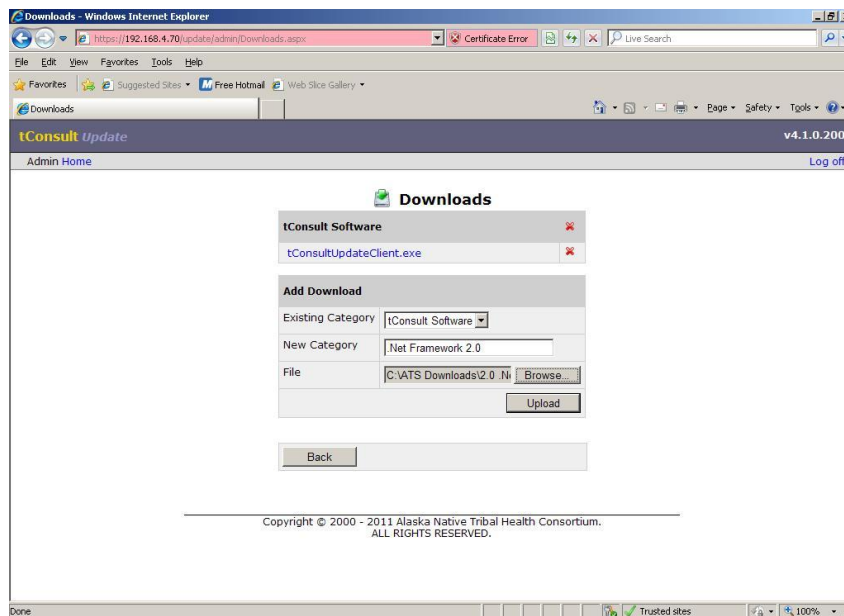


Figure 8 – Adding the File to be uploaded

12. Figure 9 shows the .Net 2.0 application has been successfully uploaded to the server. **Click on Back**.

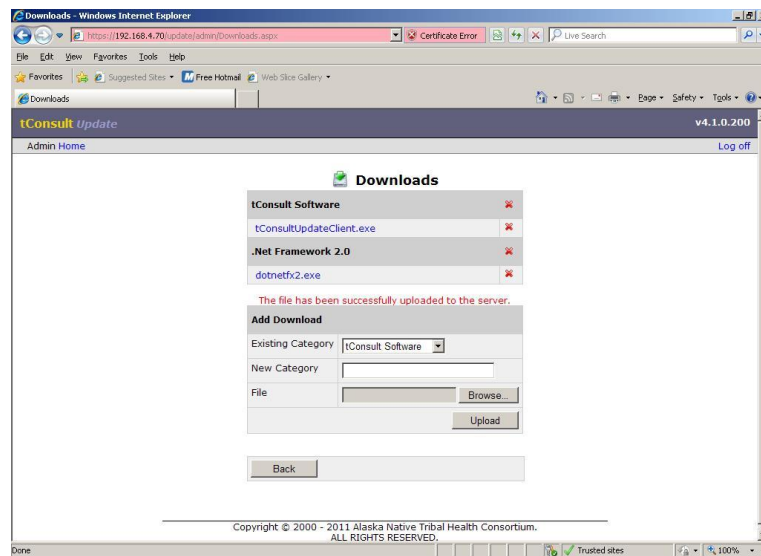


Figure 9 – Successful Upload of Application

13. From a client perspective, administrators can quickly download the appropriate application by using Internet Explorer and entering the URL of the tConsult Update Server. It is not necessary to log into the Admin Summary page to access the application executable.

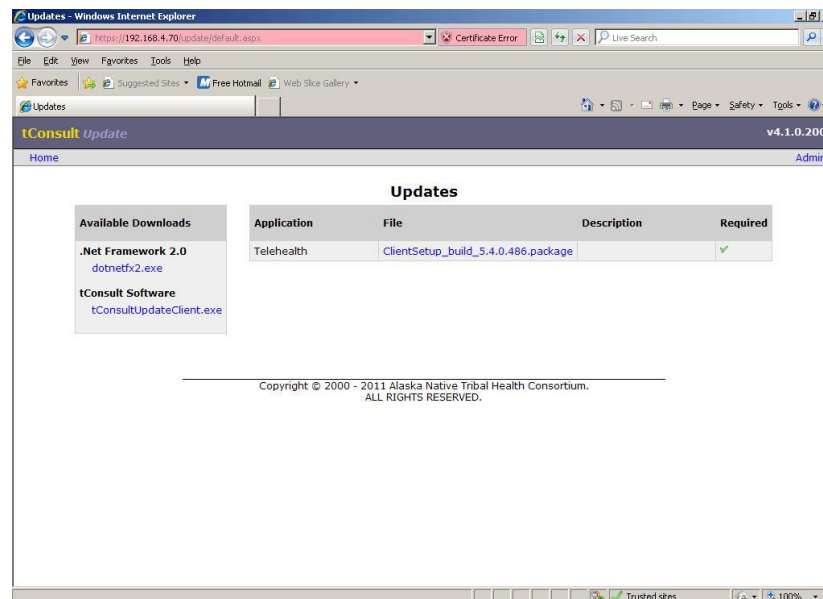


Figure 10 – Accessing the Application from a Client

Once clients have had v4.x tConsult Update Client software loaded, the client will be set for any and all signed updates/upgrades.

Actual instructions for using the tConsult Update Server will be included with each signed release.

End of procedure.