

# *Software Procedure*

## **SWP-0017 Obtaining New Certificate Public Key**

**Revision: 1**

**Effective Date: 8/31/2010**

Alaska Native Tribal Health Consortium  
Division of Health Information & Technology  
4000 Ambassador Drive  
Anchorage, AK 99508  
Tel: (907) 729-2260  
Fax: (907) 729-2269



## Contents

<b>Contents</b> .....	<b>1</b>
<b>Purpose</b> .....	<b>2</b>
<b>Audience</b> .....	<b>2</b>
<b>Scope</b> .....	<b>2</b>
<b>Obtaining the Public Key from an Existing tConsultX Database</b> .....	<b>2</b>
<b>Applying UpdateServerPubKey.sql Script</b> .....	<b>7</b>
<b>Applying UpdateNodePubKey.sql Script*</b> .....	<b>7</b>
<b>Appendix A</b> .....	<b>7</b>

## Purpose

The purpose of this document is to outline the necessary steps to obtaining the public key from within the SQL database of a tConsult Server organization with the intent of applying it to a different tConsult Server organization.

## Audience

This document is written for IT technicians and system administrators who are responsible for building, configuring or maintaining a tConsult Server. It is assumed readers are familiar with intermediate-level computer terms and concepts as well as have a basic understanding of SQL.

## Scope

On tConsult Servers that host multiple organizations (multi-org), all tConsult databases use the same public key for encrypting data between the server and clients. Moving and restoring an organization from a separate, standalone server to a new multi-org server means the public key contained in the old server SQL database is no longer valid on the new server. Clients will be unable to re-establish communication with the newly restored organization and the trust relationships with other servers will fail.

This document details the necessary steps to obtain a public key from a server that hosts multiple organizations and apply that public key to a newly restored tConsult database.

The appendix at the end of this document displays the actual SQL scripts used.

## Obtaining the Public Key from an Existing tConsultX Database

In this section, the steps are detailed for obtaining a public key from an existing tConsultX database on a server that hosts multiple organizations.

- 1.) Open Enterprise Manager (if using SQL 2000) or SQL Server Management Studio (if using SQL 2005). **Highlight an existing** tConsult database and **open SQL Query Analyzer**.

**Note: Do NOT highlight the newly restored tConsultX database.**

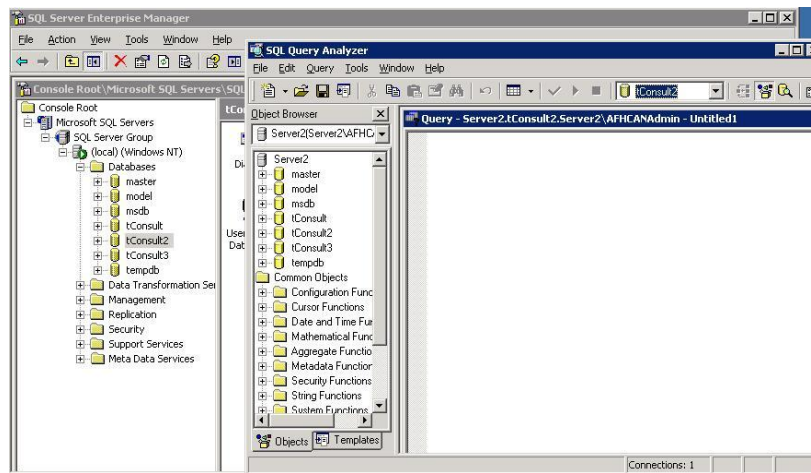


Figure 1 – Opening SQL Query Analyzer

2.) In SQL Query Analyzer *open the GetPubKey.sql.*

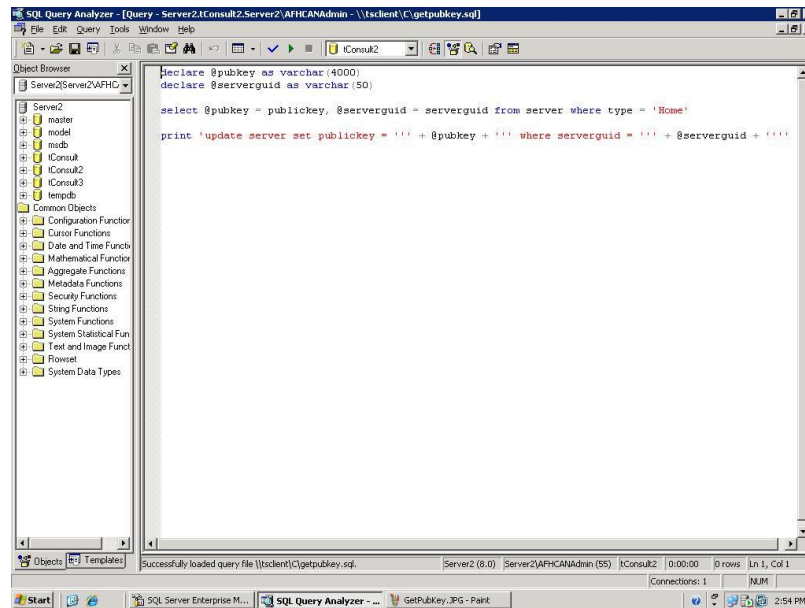


Figure 2 – Opening the SQL Script

3.) *Run the script* by clicking on the green triangle. Click in the results box below and *Select All / Copy*.



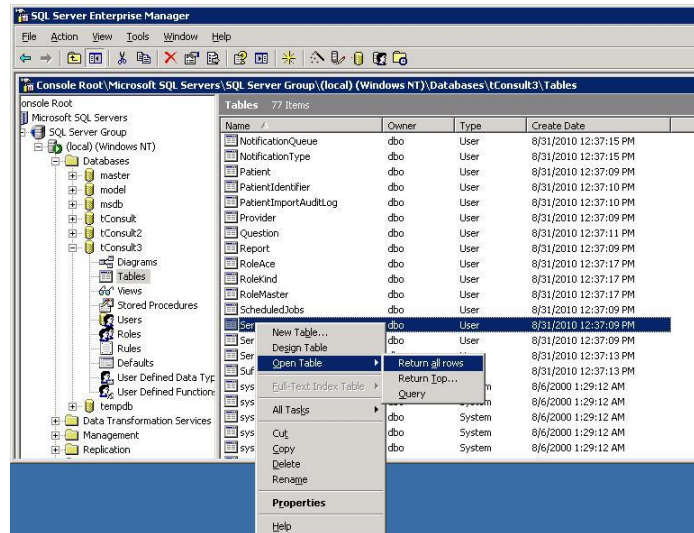


Figure 5 – Returning All Rows upon Opening a Table

- 6.) Locate the name of the organization in the Description column (type will be Home). **Highlight the ServerGUID in the first column and copy to the clipboard.**

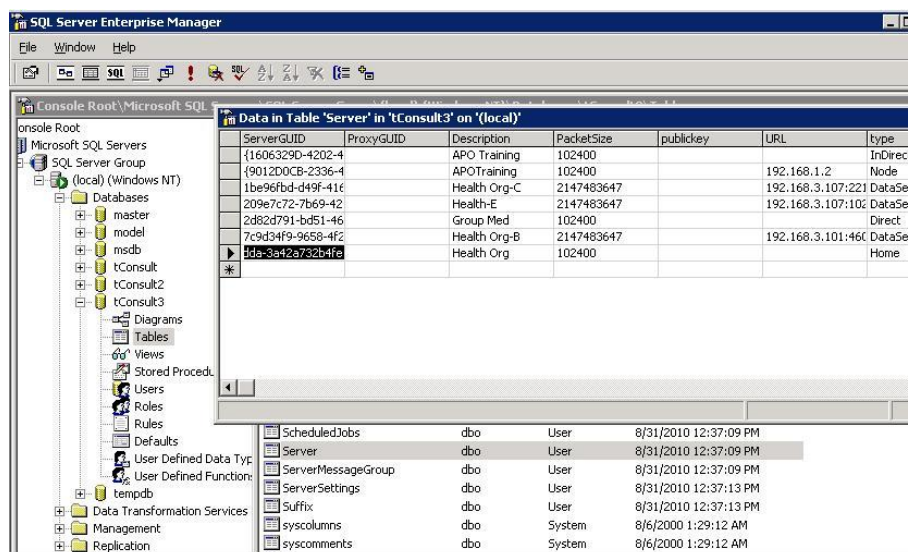


Figure 6 – Copying the ServerGUID to Computer Clipboard

- 7.) Return to Notepad and **replace the ServerGUID** between the quotations in the last line of the script. **Save** the document as UpdateServerPubKey.txt.

```
ITCpubkey.txt - Notepad
File Edit Format View Help
update server set publickey = 'MIIDAjCCAmGawIBAgIQegzcb1U5YzdJ5c2c35tzJAjBgurDgMCHQUAMIGSMSEW
HWYKozIhvcNAQKBFBhZdXBwB3J0QGFmagNhb15vcmcxZAjBgnVBAYTA1VTMQsw
COYDQZIEwJBSZSMBAGALUEBwJQw5Jag9YwdIMQ8WQYDQKQEWZBRkhdQU4X
DZANBGNVBAStBKFGESENBtJedMBSGALUEAMUQUZIQ0F0IFR1BgVozWfSdggQ0Ew
HfCnMTAwMTA2MjI1MjM1wHcnMzKxMjMxMjM1OTU5WjAKMSIWIAYDQDQEX1BRkhd
QU4gVGVzZWh1YXw0aCBtawduaw5MjM1OTU5WjAKMSIWIAYDQDQEX1BRkhd
gQCeaMb7d0nZMyxwOIG+E+GF0q4ggnMCHbSY0SwPv50QUtiWPNuYfua/TXLYBEN
mxVYvetYfIKvKhtZ58uabV2Cdyk+kd7fUF/VtbfudnebeMofdrpaeS/rnyBz0R
/+Ns8hIEAFV3t70ZG1ChovbyGRQcJbIEZvo7pv4f+FSQIDAQABoHNMHMKIHh
BGNVHQEegB8wbyAEGS7uctEg4X2/pdwxk7v/bhgZUwGZIXITAFBgkqhkiG9w0B
CQEWENlCHbVcnRAYWzOy2FULn9yZzELMAKGA1UEBHMCMVNMxZAJBGNVBAStBKF
HRlWIAyDQDQEW1BbMm0B3JhZ2UxZDZANBGNVBAStBKFGESENBtJEPMA0GA1UECXMW
QUZIQ0FOMR0wGwYDQDEXRBRkhdQU4gVGVzZWh1YXw0aCB0QVlQoww7qszZ65HI
A1Oyep15VTAjBgurDgMCHQUAA4GBADw08tH1LaqbW8FNgB5mSCL5FgxbIH5cwtc3
Q1LTRHw01009qSkv10AR61r4dxrTyl5v9FKmkKCCMk9b1QxdsXw9S82g2wZ
1fQITdfINDVf8/1xkxM2quw+m7dzw/RNcXqNFaw+swZVkyqSwnbse7rTKC/Z1I
1Wlry0s
where serverguid = '98c4925b-7164-8d34-ac4f-15689de85938'
```

Figure 7 – Copying the ServerGUID to Computer Clipboard

- 8.) Using Windows Explorer, *rename* the updateserverpubkey.txt to UpdateServerPubKey.sql.
- 9.) *Copy* UpdateServerPubKey.sql to UpdateNodePubKey.sql. Do a right-mouse click on UpdateNodePubKey.sql and choose *Edit* using Notepad. *Replace server in the first line with nodeserversetup*. *Save* the file.

```
ITCpubkey.txt - Notepad
File Edit Format View Help
update NODESERVERSETUP set publickey = 'MIIDAjCCAmGawIBAgIQegzcb1U5YzdJ5c2c35tzJAjBgurDgMCHQUAMIGSMSEW
HWYKozIhvcNAQKBFBhZdXBwB3J0QGFmagNhb15vcmcxZAjBgnVBAYTA1VTMQsw
COYDQZIEwJBSZSMBAGALUEBwJQw5Jag9YwdIMQ8WQYDQKQEWZBRkhdQU4X
DZANBGNVBAStBKFGESENBtJedMBSGALUEAMUQUZIQ0F0IFR1BgVozWfSdggQ0Ew
HfCnMTAwMTA2MjI1MjM1wHcnMzKxMjMxMjM1OTU5WjAKMSIWIAYDQDQEX1BRkhd
QU4gVGVzZWh1YXw0aCBtawduaw5MjM1OTU5WjAKMSIWIAYDQDQEX1BRkhd
gQCeaMb7d0nZMyxwOIG+E+GF0q4ggnMCHbSY0SwPv50QUtiWPNuYfua/TXLYBEN
mxVYvetYfIKvKhtZ58uabV2Cdyk+kd7fUF/VtbfudnebeMofdrpaeS/rnyBz0R
/+Ns8hIEAFV3t70ZG1ChovbyGRQcJbIEZvo7pv4f+FSQIDAQABoHNMHMKIHh
BGNVHQEegB8wbyAEGS7uctEg4X2/pdwxk7v/bhgZUwGZIXITAFBgkqhkiG9w0B
CQEWENlCHbVcnRAYWzOy2FULn9yZzELMAKGA1UEBHMCMVNMxZAJBGNVBAStBKF
HRlWIAyDQDQEW1BbMm0B3JhZ2UxZDZANBGNVBAStBKFGESENBtJEPMA0GA1UECXMW
QUZIQ0FOMR0wGwYDQDEXRBRkhdQU4gVGVzZWh1YXw0aCB0QVlQoww7qszZ65HI
A1Oyep15VTAjBgurDgMCHQUAA4GBADw08tH1LaqbW8FNgB5mSCL5FgxbIH5cwtc3
Q1LTRHw01009qSkv10AR61r4dxrTyl5v9FKmkKCCMk9b1QxdsXw9S82g2wZ
1fQITdfINDVf8/1xkxM2quw+m7dzw/RNcXqNFaw+swZVkyqSwnbse7rTKC/Z1I
1Wlry0s
where serverguid = '98c4925b-7164-8d34-ac4f-15689de85938'
```

Figure 8 – Changing Server to NodeServerSetup

## Applying UpdateServerPubKey.sql Script

1. With the restored database highlighted within Enterprise Manager, open SQL Query Analyzer. **Open UpdateServerPubKey.sql and run it** against a newly restored database.
2. **Stop and restart the tConsultX Server Service** for this database within Computer Management | Services.
3. **Repeat these two steps for each organization** that has a trust relationship with the restored organization.

## Applying UpdateNodePubKey.sql Script\*

1. Select one Node Server. Open Enterprise Manager and **highlight the S2SPH8** database. **Open SQL Query Analyzer and open UpdateNodePubKey.sql and run the script.** This will update the public key for the restored organization on the Node Server.
2. Repeat this on all Node Servers.

**Note: On the Internet Secondary Node server, run the UpdateNodePubKey.sql script on both S2SPH8-52 AND S2SPH8-60 databases.**

\*Applying UpdateNodePubKey is internal to AFHCAN only.

## Appendix A

There are 3 SQL scripts used in the obtaining and applying public keys. Each script is detailed here.

### 1.) GetPubKey.sql

```
declare @pubkey as varchar(4000)

declare @serverguid as varchar(50)

select @pubkey = publickey, @serverguid = serverguid from server where type = 'Home'

print 'update server set publickey = ''' + @pubkey + ''' where serverguid = ''' + @serverguid + '''
```

### 2.) UpdateServerPubKey.sql

Update server set publickey = 'place public key here'

Where ServerGUID = 'place ServerGUID here'

3.) UpdateNodePubKey.sql

Update nodeserversetup set publickey ='place public key here'

Where ServerGUID='place ServerGUID here'

**End of procedure.**