

Software Procedure

SWP-0005 tConsult Server - Establishing an Authoritative Time Source

Revision: 3

Effective Date: 7/28/2010

Alaska Native Tribal Health Consortium
Division of Health Information & Technology
4000 Ambassador Drive
Anchorage, AK 99508
Tel: (907) 729-2260
Fax: (907) 729-2269



Table of Contents

Purpose 2

Audience 2

Scope 2

Acronyms and Abbreviations 2

Changing Server Type to NTP 2

Enabling Ports on Windows Firewall 4

Purpose

tConsult Software now uses WCF (Windows Communications Foundation) to authenticate users. This documents details the necessary steps to enable the tConsult Server to be an authoritative time source.

Audience

This document applies to persons who work in the Information Technology department within an organization and have a basic working knowledge of Windows Server 2003.

Scope

This document pertains to servers running Windows Server 2003 being utilized to host tConsult Server software.

Acronyms and Abbreviations

Table 1
Acronyms and abbreviations

Acronym	Meaning
WCF	Windows Communications Foundation

Changing Server Type to NTP

This section outlines edits to be made to the registry of a Windows Server 2003. Editing needs to be done with extreme care to avoid critical failures. Using regedit is at the readers' own risk. AFHCAN assumes no responsibility for failure to follow the below steps.

1. Change the server type to NTP. To do this, follow these steps:
 - a. Click **Start**, click **Run**, type **regedit**, and then click **OK**.
 - b. Locate and then click the following registry subkey:

HKEY_LOCAL_MACHINE\SYSTEM\CurrentControlSet\Services\W32Time\Parameters\Type

- c. In the right pane, right-click **Type**, and then click **Modify**.
 - d. In **Edit Value**, type **NTP** in the **Value data** box, and then click **OK**
 2. Change the Announce Flags. Locate and then click the following registry subkey:

HKEY_LOCAL_MACHINE\SYSTEM\CurrentControlSet\Services\W32Time\Config\AnnounceFlags

- a. In the right pane, right-click **AnnounceFlags**, and then click **Modify**.
 - b. In **Edit DWORD Value**, type **5** in the **Value data** box, and then click **OK**.

3. Enable NTPServer. Locate and then click the following registry subkey:

HKEY_LOCAL_MACHINE\SYSTEM\CurrentControlSet\Services\W32Time\TimeProviders\NtpServer

- a. In the right pane, right-click **Enabled**, and then click **Modify**.
 - b. In **Edit DWORD Value**, type **1** in the **Value data** box, and then click **OK**.

4. Specify the time sources that will be the authoritative time source for the tConsult Server. Locate and then click the following registry subkey:

HKEY_LOCAL_MACHINE\SYSTEM\CurrentControlSet\Services\W32Time\Parameters

- a. In the right pane, right-click **NtpServer**, and then click **Modify**.
 - b. In **Edit Value**, type *Peers* in the **Value data** box, and then click **OK**.

Note *Peers* is a placeholder for a space-delimited list of peers from which your computer obtains time stamps. Each DNS name that is listed must be unique. You must append **,0x1** to the end of each DNS name. If you do not append **,0x1** to the end of each DNS name, the changes made in step 5 will not take effect.

5. Set Windows Time service to automatic and then start it

Enabling Ports on Windows Firewall

This section lists the steps necessary to open up two ports on Windows Firewall to allow WCF and Time Server to function properly.

1. Enabling Ports on the Windows Firewall. tConsult Servers uses Windows Firewall as part of the overall security strategy. By default, only 3 ports are open: HTTP port 80, HTTPS port 443 and RDP port 3389. WCF and Time Server requires two additional ports be enabled.

Open the Windows Firewall Exceptions page for Local Area Connection Properties.

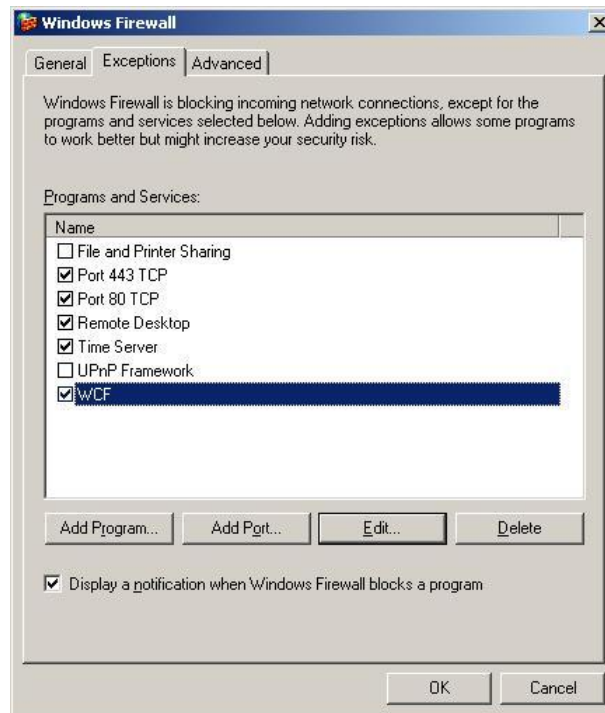


Figure 1 – Windows Firewall – Exceptions

Select Add Port and enter WCF, Port 6968, TCP

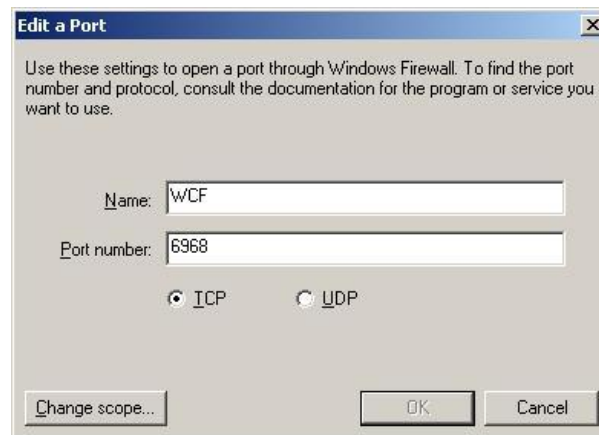


Figure 2 – Adding WCF Port

Select Add Port and enter Time Server, Port 123, UDP

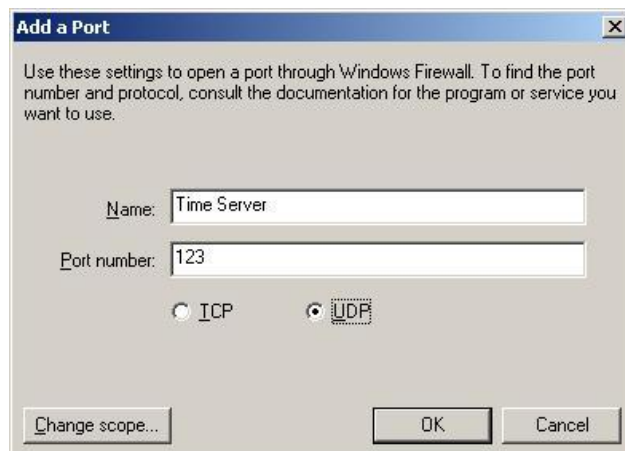


Figure 3 – Adding Time Server Port

End of procedure.